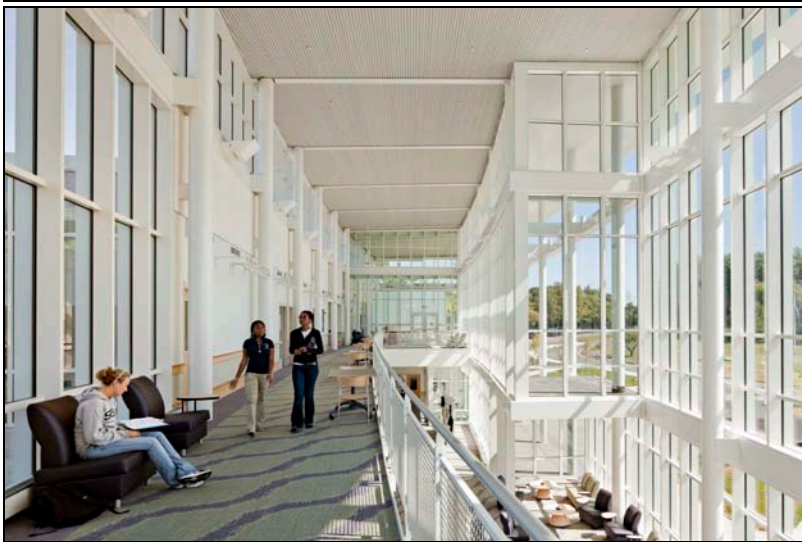


Great Path Academy

Manchester Community College

Manchester, CT



With the completion of the new state-of-the-art home for Great Path Academy, the inter-district magnet school became the first public high school constructed on a college campus in Connecticut.

The project consisted of the construction a new 75,000 square foot, two-story facility which resembles the other modern-looking structures on the MCC campus. The design promotes easy access to the College and facilitates collaboration between Great Path and MCC.

The new school includes 18 classrooms with advanced technology and flexible learning spaces; science, computer, and language laboratories; art studios; an internet café; a gymnasium; and a large community room.

At the school's dedication ceremony, Governor Rell stated, "This beautiful new magnet school offers more students greater educational opportunities – especially those who may not otherwise attend college. DPW Commissioner Curtis added, "My thanks to the design and construction team for their dedication, and for bringing this important project in under budget."

Role: General Contractor

Owner: State of Connecticut
Department of Public Works

Architect: Tai Soo Kim Partners

Construction Administrator: Gar-San Corporation